

# GLOUCESTER COUNTY SURVEY MARK DATA SHEET

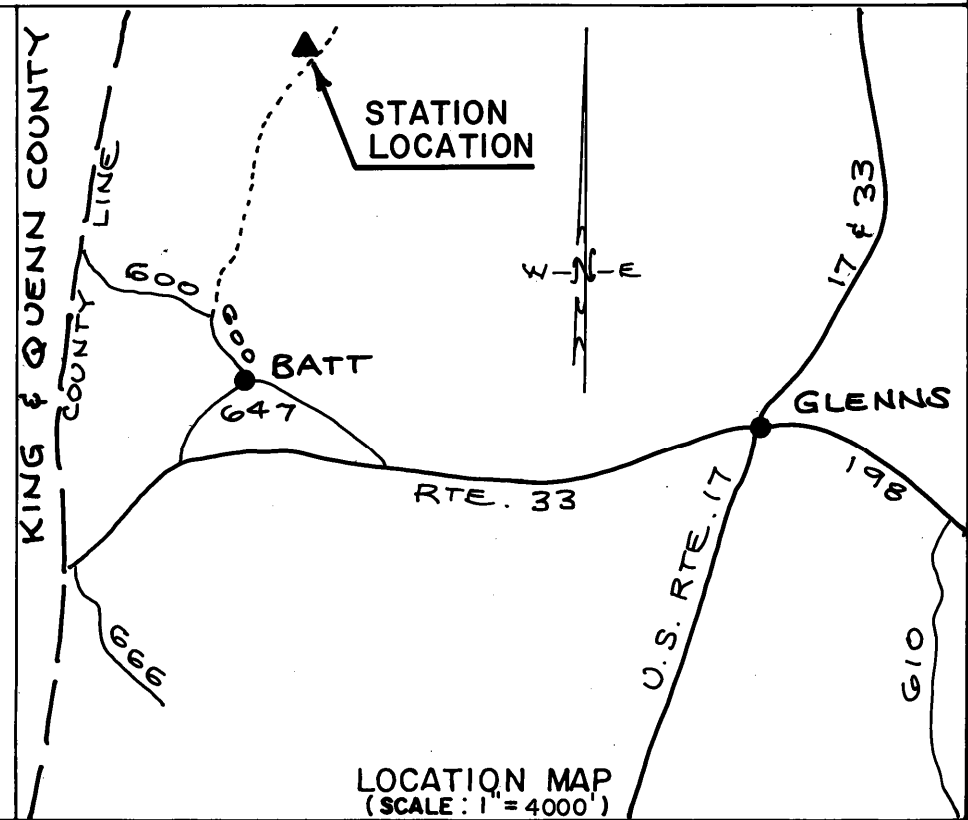
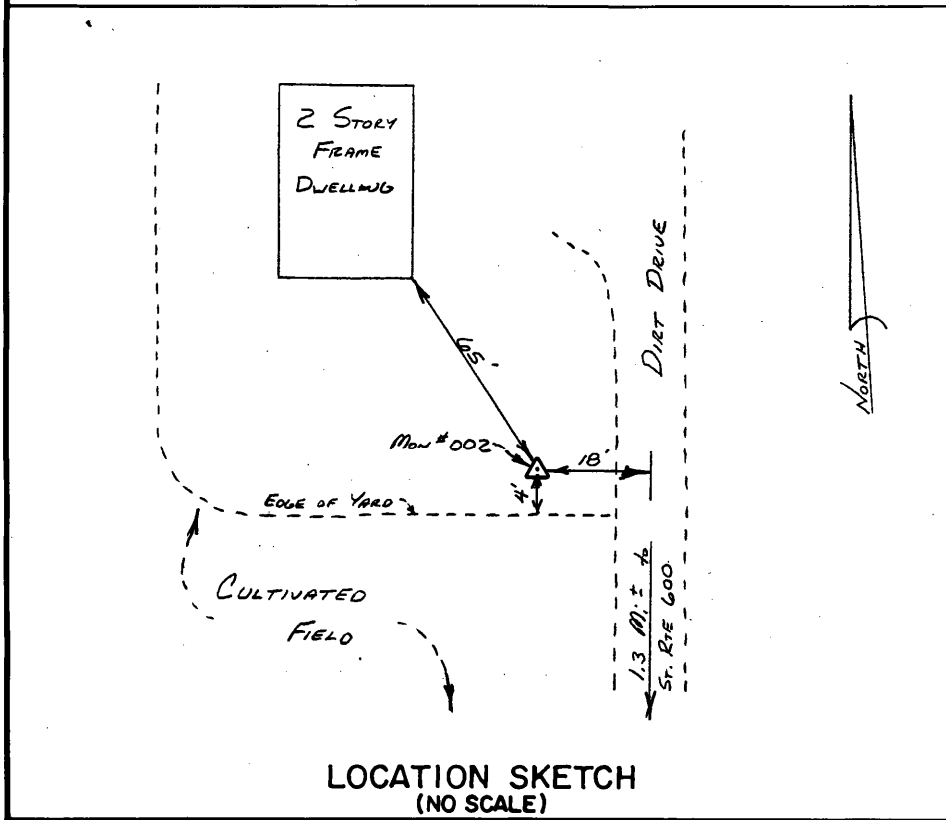
**STATION NO.**  
002

<b>HORIZONTAL DATA :</b> VA. STATE PLANE COORD. - SOUTH ZONE (NAD 1983)		
UNITS	EASTING (X)	NORTHING (Y)
METERS	3654028.517	1140888.195
U.S. SURVEY FT.	12021066.893	3743064.020
LATITUDE (DMS)	37 35 17.99465	
LONGITUDE (DMS)	76 38 33.39707	
SCALE FACTOR	0.99995281	
CONVERGENCE $\sphericalangle$ (DMS)	1 7 38.27	
<b>VERTICAL DATA :</b> REF. TO NATL. GEOD. VERT. DATUM (1988)		
UNITS	STATION ELEVATION	
METERS	11.63	
U.S. SURVEY FT.	38.15	

**STATION DESCRIPTION :**

**DISTRICT :** PETSORTH

A 3-1/4" ALUMINUM DISK MONUMENT SET APPROXIMATELY FLUSH WITH THE GROUND STAMPED STATION NO. 002. TO REACH: FROM THE INTERSECTION OF U. S. ROUTE 17 AND STATE ROUTE 33 AT GLENN'S, GO ABOUT 1.5 MILES WEST ON STATE ROUTE 33 TO THE INTERSECTION OF STATE ROUTE 647; GO ABOUT 0.7 MILE NORTHWEST ON STATE ROUTE 647 THE INTERSECTION OF STATE ROUTE 600; GO ABOUT 0.2 MILE NORTH ON STATE ROUTE 600 TO A GRAVEL DRIVE HEADING NORTH; CONTINUE ON GRAVEL DRIVE 1.3 MILES TO AN OLD FARM HOUSE AND MONUMENT SITE.



DATE: JANUARY, 1992

NOTE: USERS OF MONUMENTS LOCATED ON PRIVATE PROPERTY  
MUST OBTAIN LAND OWNERS PERMISSION BEFORE ENTERING



**DAWSON & PHILLIPS, D.C.**  
CERTIFIED LAND SURVEYORS  
(804) 693-2993