

GLOUCESTER COUNTY SURVEY MARK DATA SHEET

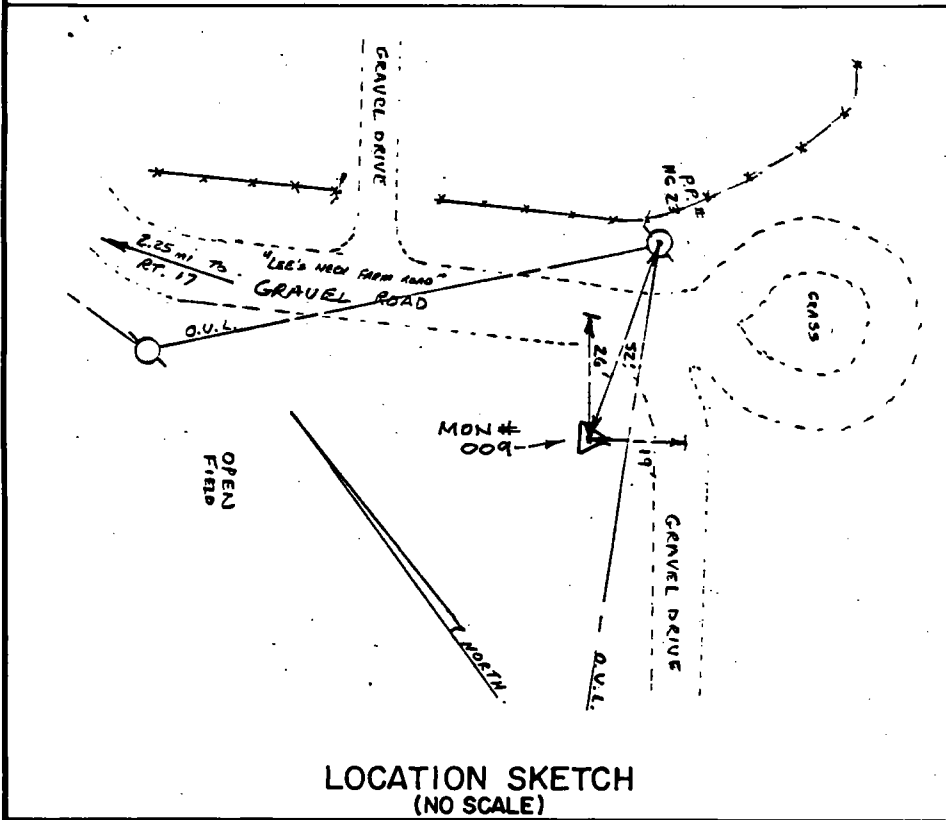
STATION NO.
009

HORIZONTAL DATA :		
VA. STATE PLANE COORD. - SOUTH ZONE (NAD 1983)		
UNITS	EASTING (X)	NORTHING (Y)
METERS	3662758.933	1133963.435
U.S. SURVEY FT.	12016901.599	3720345.036
LATITUDE (DMS)		37 31 34.22262
LONGITUDE (DMS)		76 39 30.64408
SCALE FACTOR		0.99994922
CONVERGENCE \sphericalangle (DMS)		1 7 3.52
VERTICAL DATA :		
REF. TO NATL. GEOD. VERT. DATUM (1988)		
UNITS	STATION ELEVATION	
METERS	25.44	
U.S. SURVEY FT.	83.46	

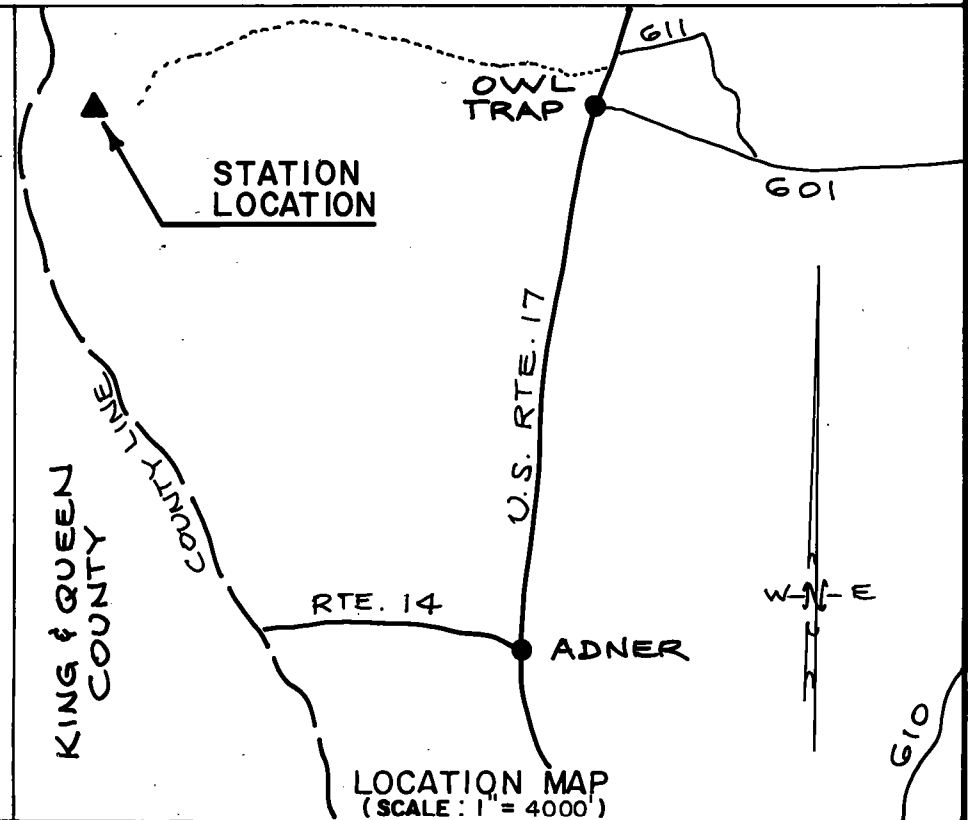
STATION DESCRIPTION :

DISTRICT : PETSORTH

A 3-1/4" ALUMINUM DISK MONUMENT SET APPROXIMATELY FLUSH WITH THE GROUND STAMPED STATION NO. 009. TO REACH: FROM THE INTERSECTION OF U. S. ROUTE 17 AND STATE ROUTE 14 AT ADNER, GO ABOUT 2.3 MILES NORTH ON U. S. ROUTE 17 TO "LEE'S NECK FARM" ROAD; GO ABOUT 2.3 MILES WEST ON "LEE'S NECK FARM" ROAD TO MONUMENT SITE.



LOCATION SKETCH
(NO SCALE)



LOCATION MAP
(SCALE: 1" = 4000')

DATE: JANUARY, 1992

NOTE: USERS OF MONUMENTS LOCATED ON PRIVATE PROPERTY
MUST OBTAIN LAND OWNERS PERMISSION BEFORE ENTERING



DAWSON & PHILLIPS, P.C.
CERTIFIED LAND SURVEYORS
(804) 693-2993