

# GLOUCESTER COUNTY SURVEY MARK DATA SHEET

**STATION NO.**

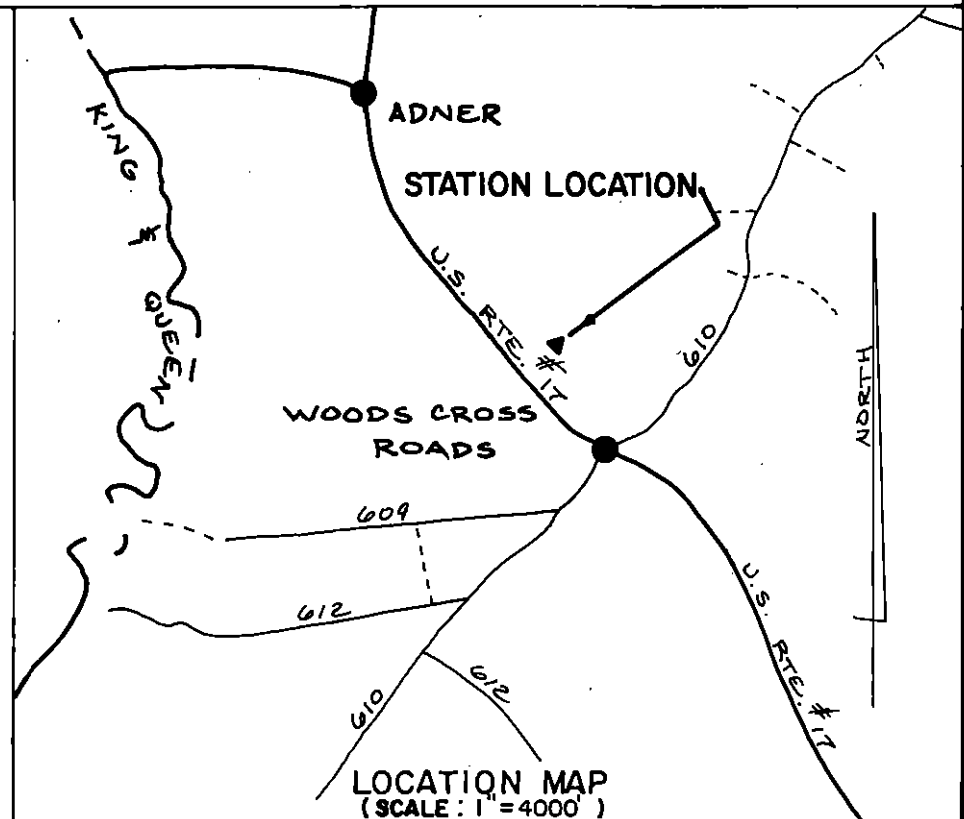
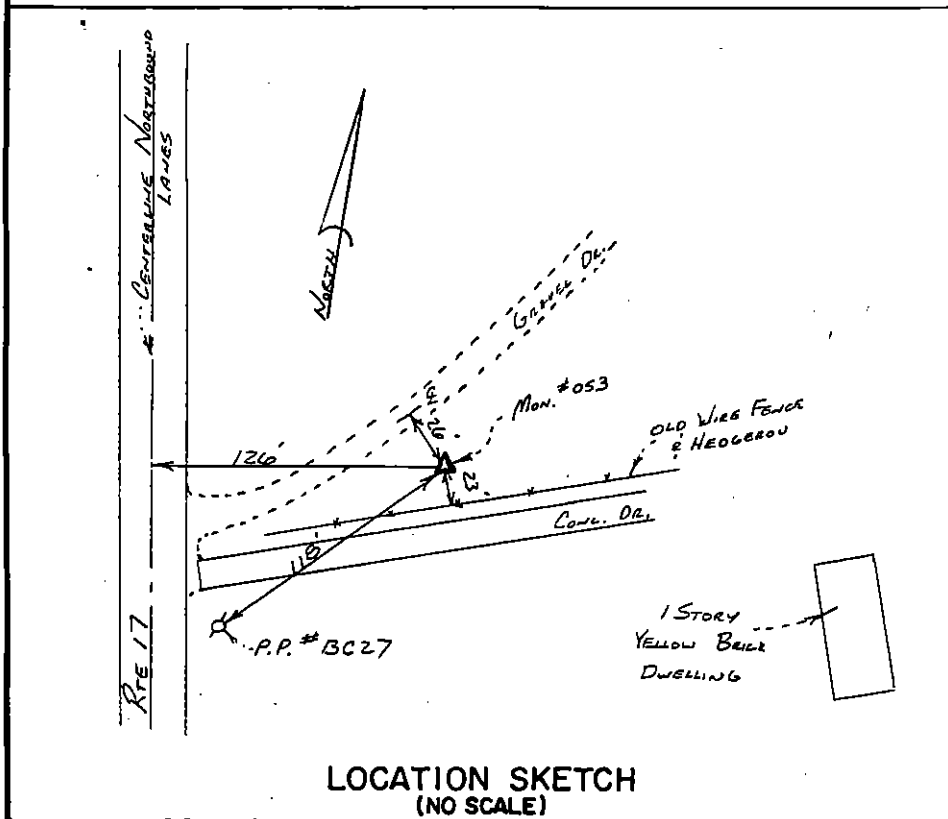
**053**

<b>HORIZONTAL DATA :</b> VA. STATE PLANE COORD. - SOUTH ZONE (NAD 1983)		
UNITS	EASTING (X)	NORTHING (Y)
METERS	3666113.331	1129084.410
U.S. SURVEY FT.	12027906.820	3704337.768
LATITUDE (DMS)	37 28 53.84449	
LONGITUDE (DMS)	76 37 18.00488	
SCALE FACTOR	0.99994738	
CONVERGENCE $\sphericalangle$ (DMS)	1 8 24.02	
<b>VERTICAL DATA :</b> REF. TO NATL. GEOD. VERT. DATUM (1988)		
UNITS	STATION ELEVATION	
METERS	24.80	
U.S. SURVEY FT.	81.37	

**STATION DESCRIPTION :**

**DISTRICT :** PETSWORTH

A 3 1/4" ALUMINUM DISK MONUMENT SET APPROXIMATELY FLUSH WITH THE GROUND STAMPED STATION NO. 053. TO REACH: FROM THE INTERSECTION OF U.S. ROUTE 17 AND STATE ROUTE 610 AT WOODS CROSS ROADS, GO ABOUT 0.4 MILE NORTH ON U.S. ROUTE 17 TO INTERSECTION OF U.S. ROUTE 17, GRAVEL DRIVE AND CONCRETE DRIVE, CONTINUE ABOUT 150' NORTHEAST ON GRAVEL DRIVE TO MONUMENT SITE.



DATE: JANUARY, 1992

NOTE: USERS OF MONUMENTS LOCATED ON PRIVATE PROPERTY  
MUST OBTAIN LAND OWNERS PERMISSION BEFORE ENTERING



**DAWSON & PHILLIPS, P.C.**

CERTIFIED LAND SURVEYORS  
(804) 693-2993