

# GLOUCESTER COUNTY SURVEY MARK DATA SHEET

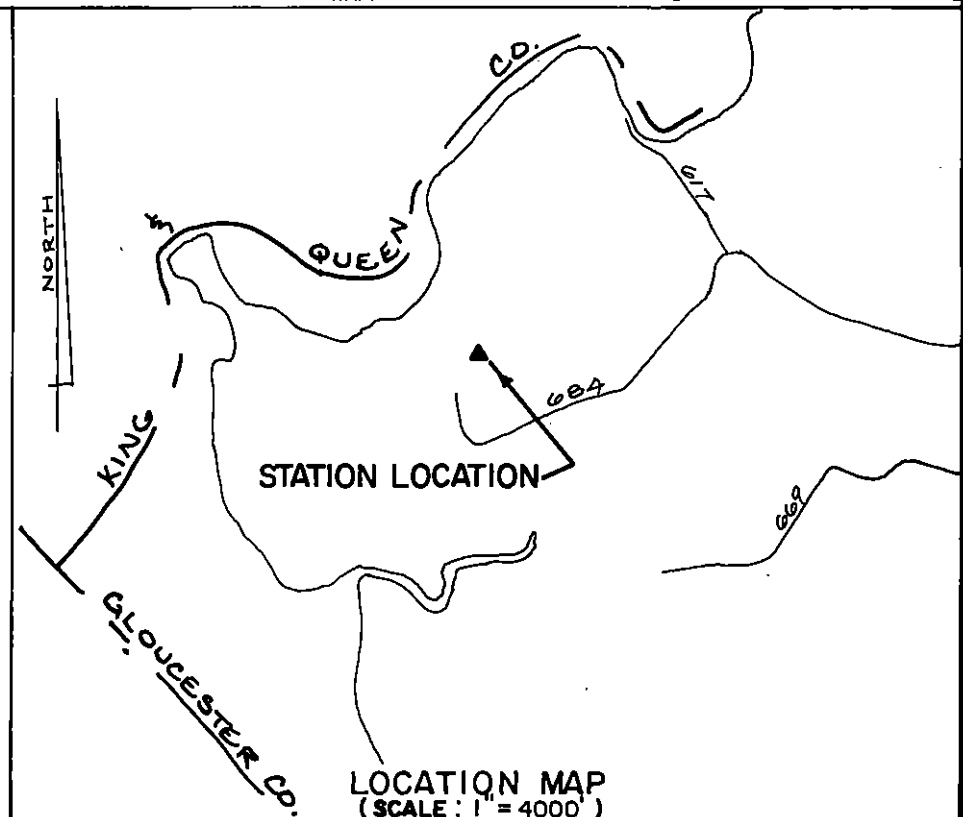
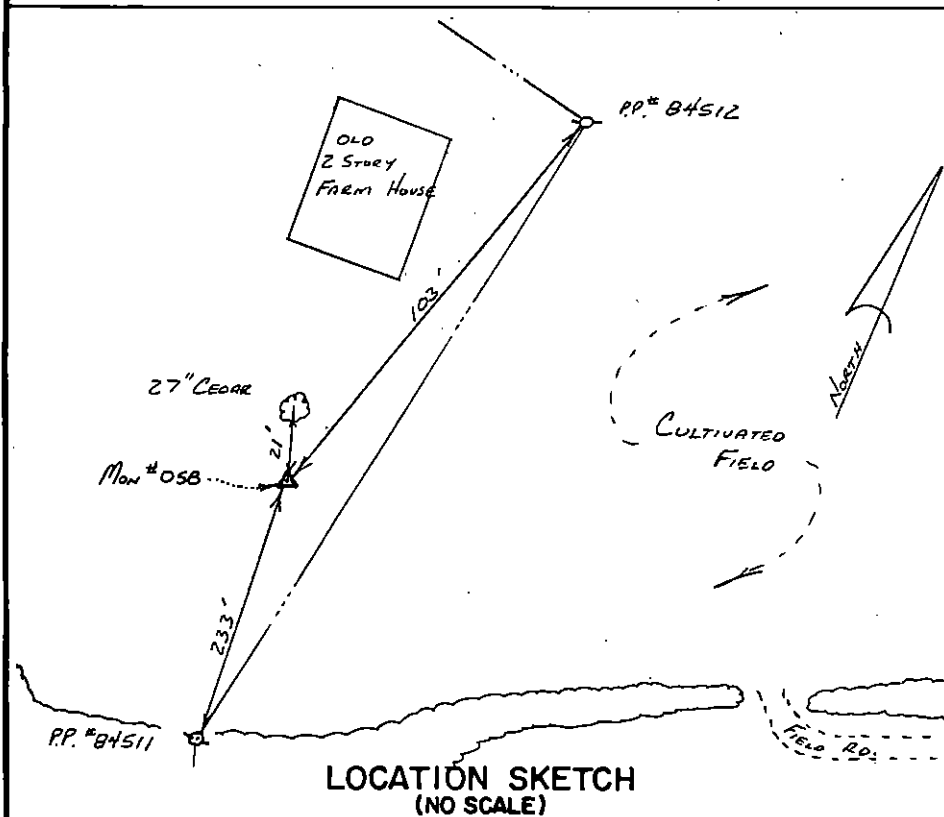
**STATION NO.**  
058

HORIZONTAL DATA :		
VA. STATE PLANE COORD. - SOUTH ZONE (NAD 1983)		
UNITS	EASTING (X)	NORTHING (Y)
METERS	3660776.019	1124498.416
U.S. SURVEY FT.	12010395.989	3689291.886
LATITUDE (DMS)		37 26 28.50013
LONGITUDE (DMS)		76 40 58.80960
SCALE FACTOR		0.99994623
CONVERGENCE $\sphericalangle$ (DMS)		1 6 10.01
VERTICAL DATA :		
REF. TO NATL. GEOD. VERT. DATUM (1988)		
UNITS	STATION ELEVATION	
METERS	1.40	
U.S. SURVEY FT.	4.68	

**STATION DESCRIPTION :**

**DISTRICT :** PETSWORTH

A 3 1/4" ALUMINUM DISK MONUMENT SET APPROXIMATELY FLUSH WITH THE GROUND STAMPED STATION NO. 058. TO REACH: FROM THE INTERSECTION OF U.S. ROUTE 17 AND STATE ROUTE 610 AT WOODS CROSS ROADS, GO ABOUT 2.8. MILES SOUTHWEST ON STATE ROUTE 610 TO THE INTERSECTION OF STATE ROUTE 610 AND STATE ROUTE 617 AT SIGNPINE, GO ABOUT 1.0 MILE NORTHWEST ON STATE ROUTE 617 TO THE INTERSECTION OF STATE ROUTE 617 AND STATE ROUTE 684, GO ABOUT 1.1 MILES SOUTHWEST ON STATE ROUTE 684 TO HEDGEROW ON NORTH SIDE OF ROAD, CONTINUE NORTHWEST ALONG DIRT FIELD ROAD IN A CULTIVATED FIELD TO CUT THROUGH IN HEDGEROW, CONTINUE 240' TO MONUMENT.



DATE: JANUARY, 1992

NOTE: USERS OF MONUMENTS LOCATED ON PRIVATE PROPERTY  
MUST OBTAIN LAND OWNERS PERMISSION BEFORE ENTERING



**DAWSON & PHILLIPS, D.C.**  
CERTIFIED LAND SURVEYORS  
(804) 693-2993