

GLOUCESTER COUNTY SURVEY MARK DATA SHEET

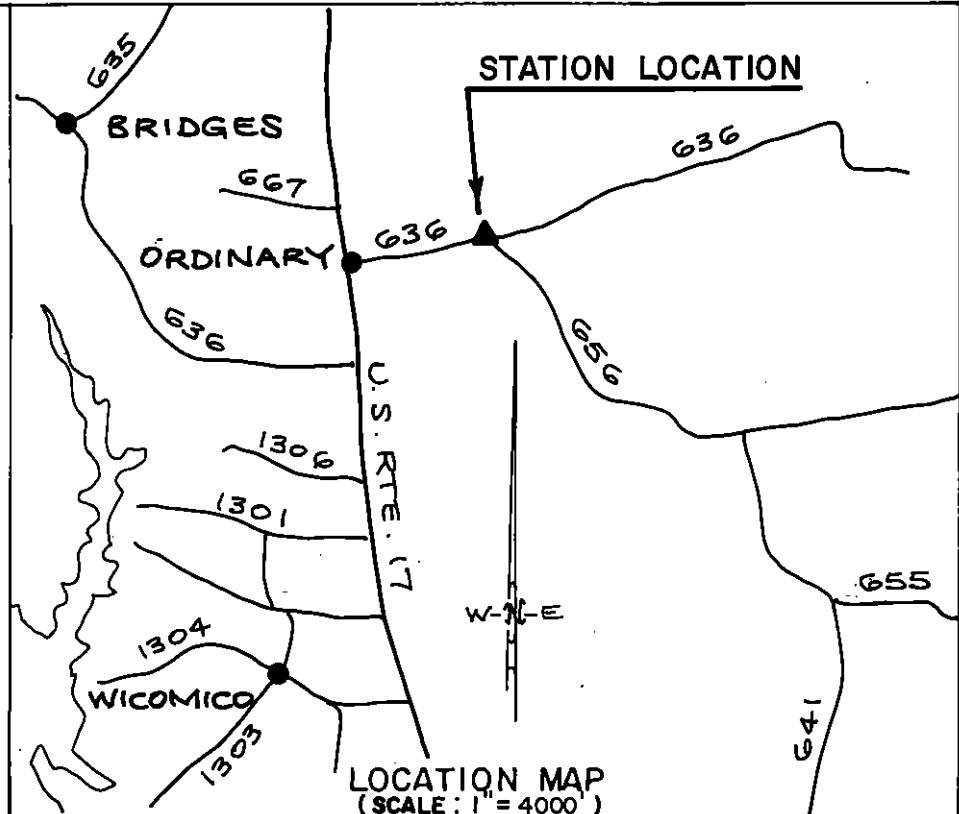
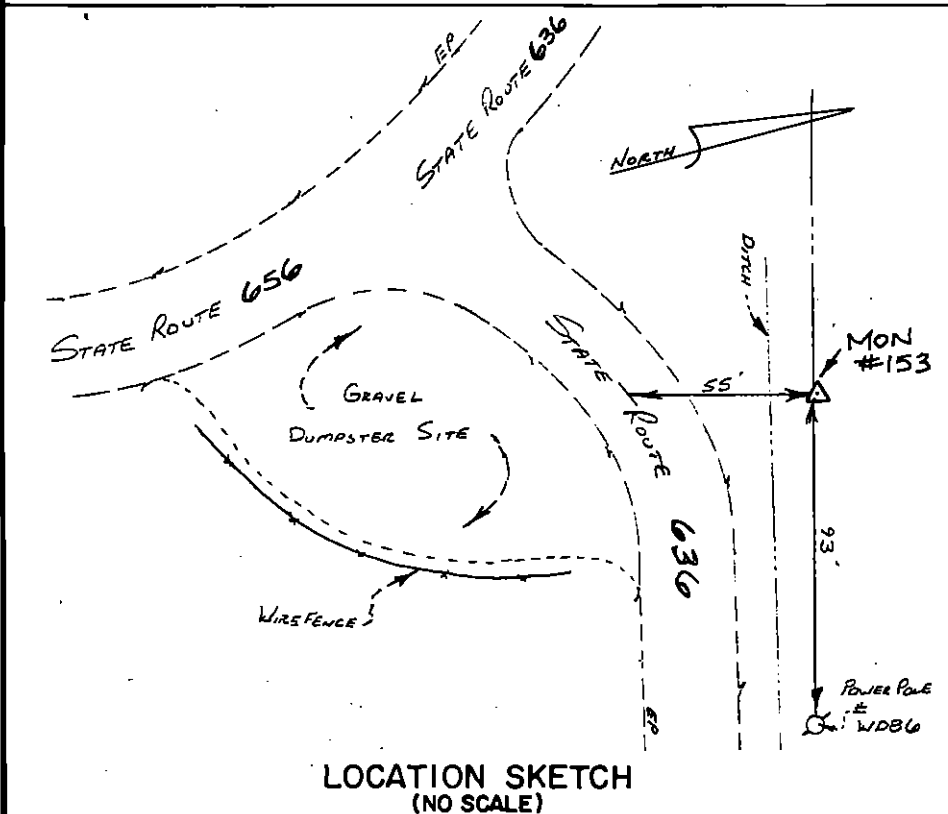
STATION NO.
153

HORIZONTAL DATA :		
VA. STATE PLANE COORD. - SOUTH ZONE (NAD 1983)		
UNITS	EASTING (X)	NORTHING (Y)
METERS	3677034.117	1111108.197
U.S. SURVEY FT.	12063736.099	3645360.810
LATITUDE (DMS)		37 19 3.57377
LONGITUDE (DMS)		76 30 9.06102
SCALE FACTOR		0.99994578
CONVERGENCE α (DMS)		1 12 44.35
VERTICAL DATA :		
REF. TO NATL. GEOD. VERT. DATUM (1988)		
UNITS	STATION ELEVATION	
METERS	4.24	
U.S. SURVEY FT.	13.91	

STATION DESCRIPTION :

DISTRICT : ABINGDON

A 3-1/4" ALUMINUM DISK MONUMENT SET APPROXIMATELY FLUSH WITH THE GROUND STAMPED STATION NO. 153. TO REACH: FROM THE INTERSECTION OF U. S. ROUTE 17 AND STATE ROUTE 636 AT ORDINARY, GO ABOUT 0.6 MILE EAST ON STATE ROUTE 636 TO THE INTERSECTION OF STATE ROUTE 636 AND STATE ROUTE 656 AND MONUMENT SITE.



DATE: JANUARY, 1992

NOTE: USERS OF MONUMENTS LOCATED ON PRIVATE PROPERTY
MUST OBTAIN LAND OWNERS PERMISSION BEFORE ENTERING



DAWSON & PHILLIPS, D.C.
CERTIFIED LAND SURVEYORS
(804) 693-2993