

# GLOUCESTER COUNTY SURVEY MARK DATA SHEET

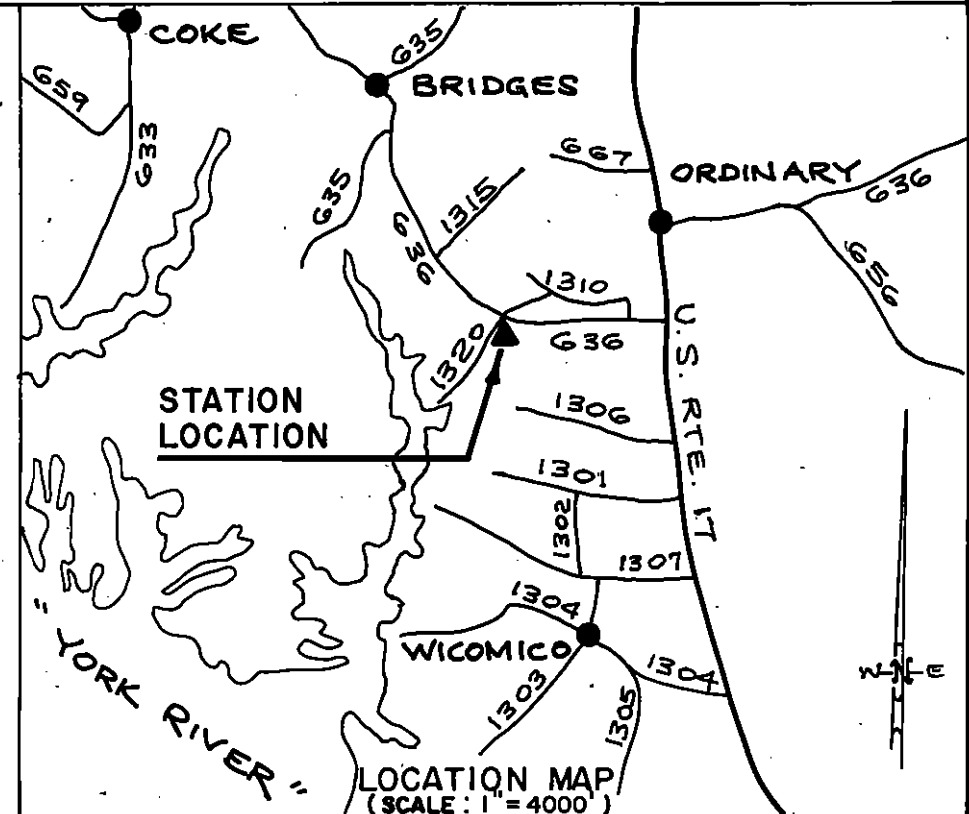
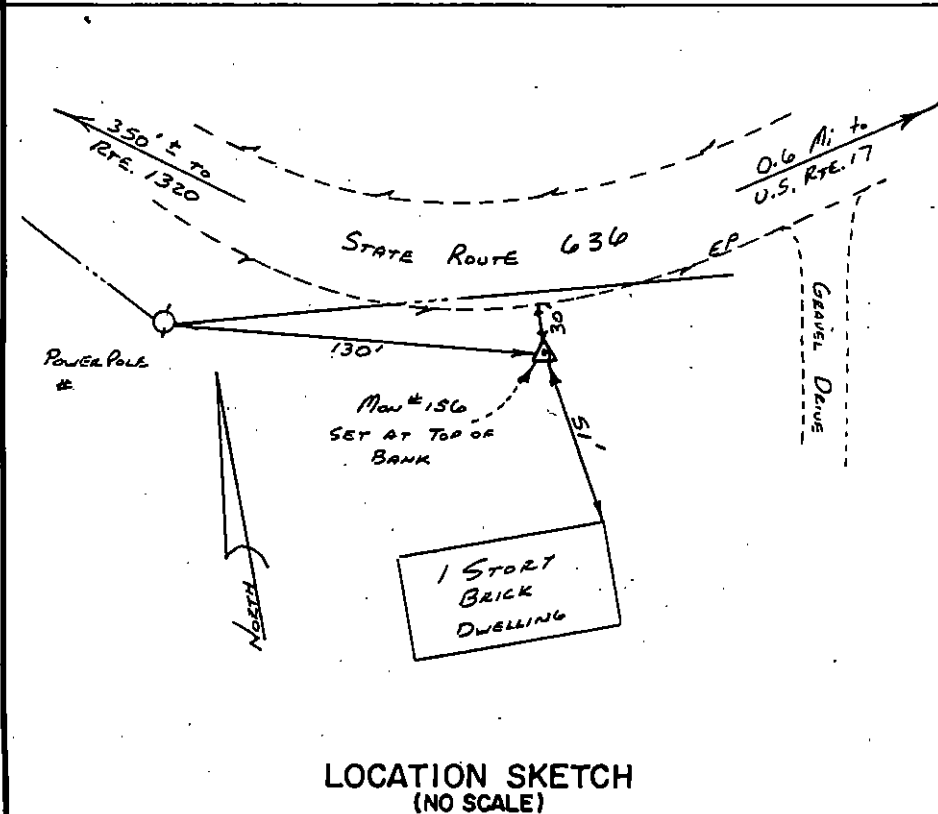
**STATION NO.**  
**156**

<b>HORIZONTAL DATA :</b>		
VA. STATE PLANE COORD. - SOUTH ZONE (NAD 1983)		
UNITS	EASTING (X)	NORTHING (Y)
METERS	3675146.558	1110255.021
U.S. SURVEY FT.	1207543.332	3642561.681
LATITUDE (DMS)	37 18 37.19224	
LONGITUDE (DMS)	76 31 26.43444	
SCALE FACTOR	0.99994590	
CONVERGENCE $\sphericalangle$ (DMS)	1 11 57.40	
<b>VERTICAL DATA :</b>		
REF. TO NATL. GEOD. VERT. DATUM (1988)		
UNITS	STATION ELEVATION	
METERS	7.99	
U.S. SURVEY FT.	26.22	

**STATION DESCRIPTION :**

**DISTRICT :** ABINGDON

A 3-1/4" ALUMINUM DISK MONUMENT SET APPROXIMATELY FLUSH WITH THE GROUND STAMPED STATION NO. 156. TO REACH: FROM THE INTERSECTION OF U. S. ROUTE 17 AND STATE ROUTE 636, GO ABOUT 0.6 MILE WEST ON STATE ROUTE 636 TO MONUMENT SITE; MONUMENT IS APPROXIMATELY 350' EAST OF THE INTERSECTION OF STATE ROUTE 636 AND STATE ROUTE 1320.



DATE: JANUARY, 1992

NOTE: USERS OF MONUMENTS LOCATED ON PRIVATE PROPERTY  
MUST OBTAIN LAND OWNERS PERMISSION BEFORE ENTERING



**DAWSON & PHILLIPS, P.C.**  
CERTIFIED LAND SURVEYORS  
(804) 693-2993