

# GLOUCESTER COUNTY SURVEY MARK DATA SHEET

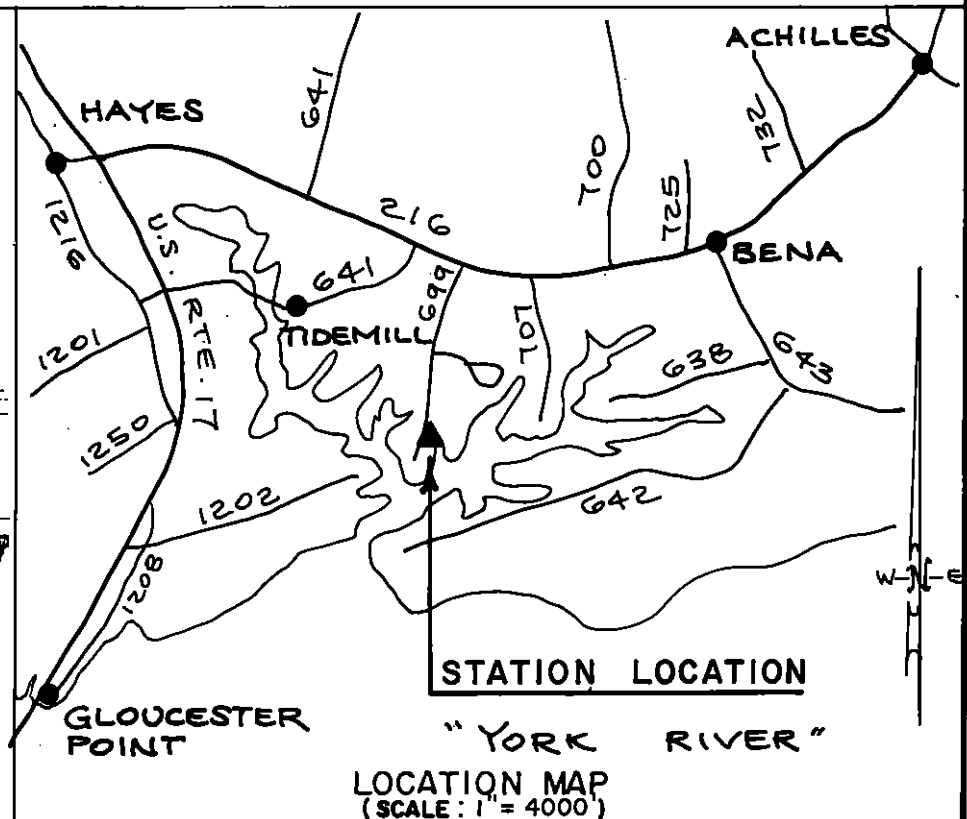
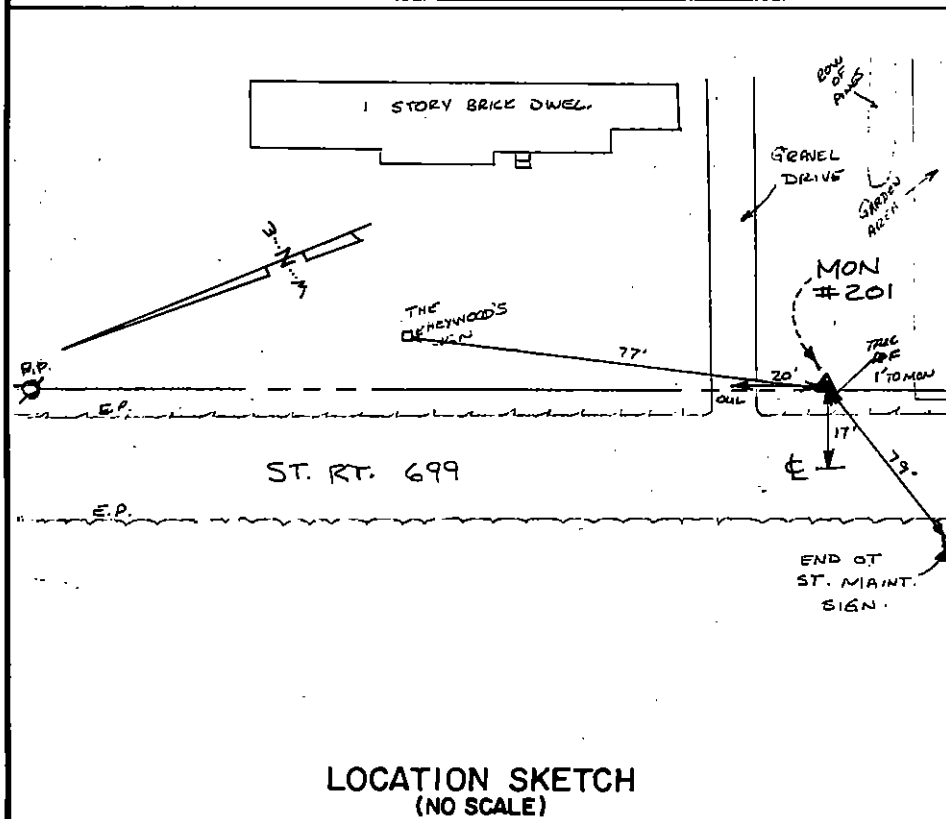
**STATION NO.**  
201

<b>HORIZONTAL DATA :</b>		
VA. STATE PLANE COORD. - SOUTH ZONE (NAD 1983)		
UNITS	EASTING (X)	NORTHING (Y)
METERS	3679441.236	1104758.614
U.S. SURVEY FT.	12071633.455	3624528.886
LATITUDE (DMS)		37 15 35.98290
LONGITUDE (DMS)		76 28 36.84246
SCALE FACTOR		0.99994715
CONVERGENCE $\angle$ (DMS)		1 13 40.33
<b>VERTICAL DATA :</b>		
REF. TO NATL. GEOD. VERT. DATUM (1988)		
UNITS	STATION ELEVATION	
METERS	2.63	
U.S. SURVEY FT.	8.62	

**STATION DESCRIPTION :**

**DISTRICT :** YORK

A 3-1/4" ALUMINUM DISK MONUMENT SET APPROXIMATELY FLUSH WITH THE GROUND STAMPED STATION NO. 201. TO REACH: FROM THE INTERSECTION OF STATE ROUTE 216 AND STATE ROUTE 643 AT BENA, GO ABOUT 0.98 MILE WEST ON STATE ROUTE 216 TO INTERSECTION WITH STATE ROUTE 699; GO ABOUT 0.7 MILE SOUTHWEST ON STATE ROUTE 699 TO MONUMENT SITE ON EAST SIDE OF STATE ROUTE 699.



DATE: JANUARY, 1992

NOTE: USERS OF MONUMENTS LOCATED ON PRIVATE PROPERTY  
MUST OBTAIN LAND OWNERS PERMISSION BEFORE ENTERING



**DAWSON & PHILLIPS, P.C.**  
CERTIFIED LAND SURVEYORS  
(804) 693-2993