

# GLOUCESTER COUNTY SURVEY MARK DATA SHEET

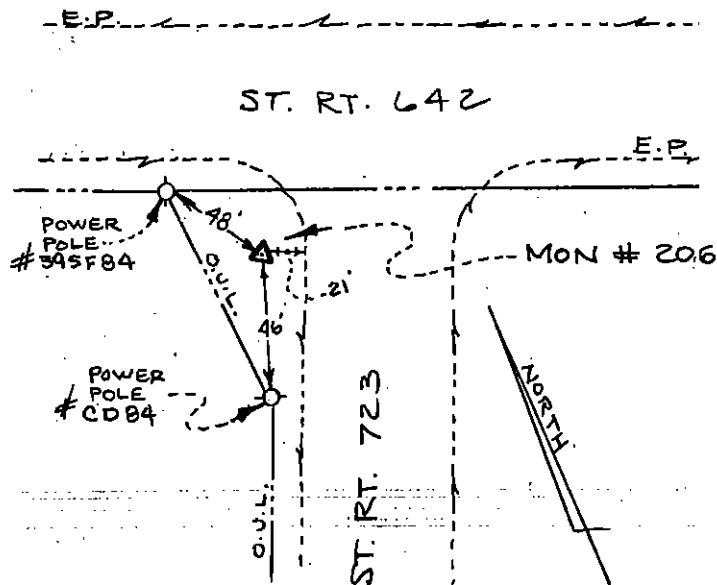
**STATION NO.**  
206

<b>HORIZONTAL DATA :</b> VA. STATE PLANE COORD. - SOUTH ZONE (NAD 1983)		
UNITS	EASTING (X)	NORTHING (Y)
METERS	3681469.139	1104609.933
U.S. SURVEY FT.	12078286.667	3624041.089
LATITUDE (DMS)	37 15 29.74331	
LONGITUDE (DMS)	76 27 14.69039	
SCALE FACTOR	0.99994721	
CONVERGENCE $\sphericalangle$ (DMS)	1 14 30.19	
<b>VERTICAL DATA :</b> REF. TO NATL. GEOD. VERT. DATUM (1988)		
UNITS	STATION ELEVATION	
METERS	1.44	
U.S. SURVEY FT.	4.72	

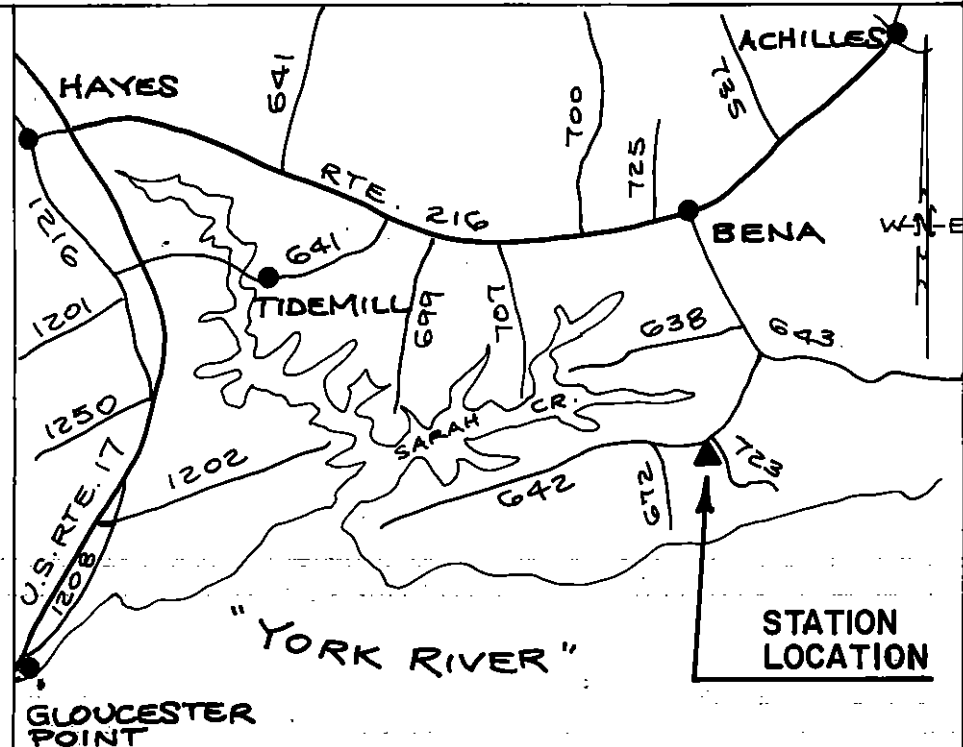
**STATION DESCRIPTION :**

**DISTRICT :** YORK

A 3-1/4" ALUMINUM DISK MONUMENT SET APPROXIMATELY FLUSH WITH THE GROUND STAMPED STATION NO. 206. TO REACH: FROM THE INTERSECTION OF STATE ROUTE 216 AND STATE ROUTE 643 AT BENA, GO ABOUT 0.66 MILE SOUTHEAST ON STATE ROUTE 643 TO INTERSECTION WITH STATE ROUTE 642; GO ABOUT 0.38 MILE SOUTHWEST ON STATE ROUTE 642 TO MONUMENT SITE AT INTERSECTION OF STATE ROUTE 723



**LOCATION SKETCH**  
(NO SCALE)



**LOCATION MAP**  
(SCALE: 1"=4000')

DATE: JANUARY, 1992

NOTE: USERS OF MONUMENTS LOCATED ON PRIVATE PROPERTY  
MUST OBTAIN LAND OWNERS PERMISSION BEFORE ENTERING



**DAWSON & PHILLIPS, D.C.**  
CERTIFIED LAND SURVEYORS  
(804) 693-2993