

GLOUCESTER COUNTY SURVEY MARK DATA SHEET

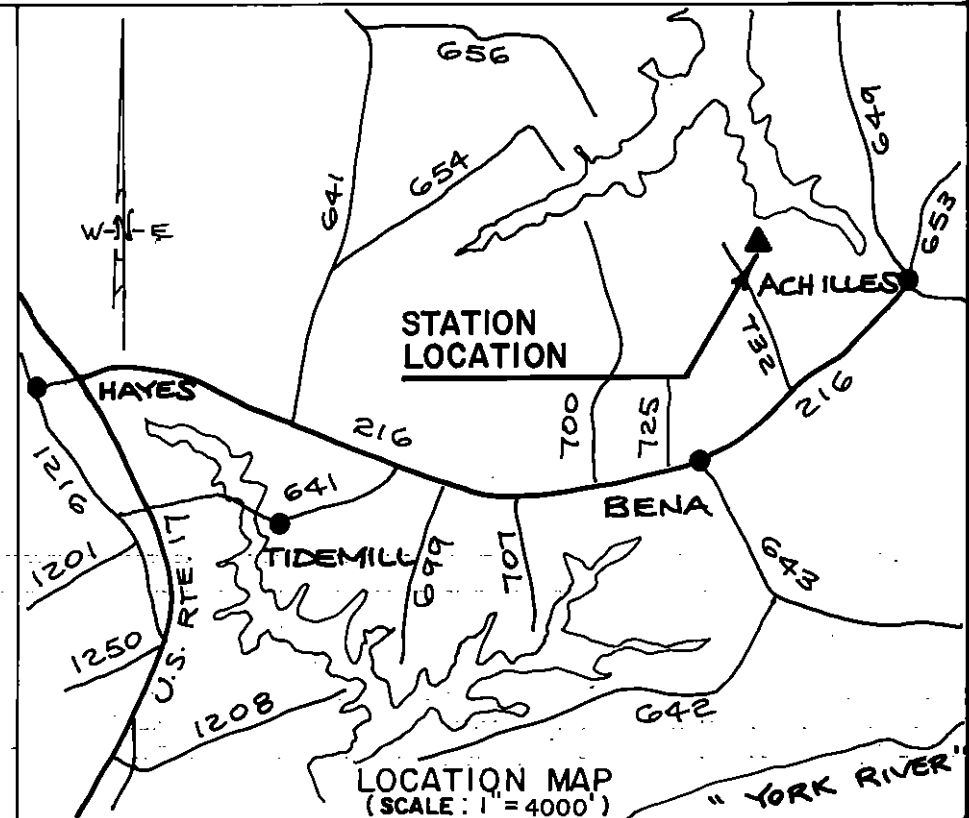
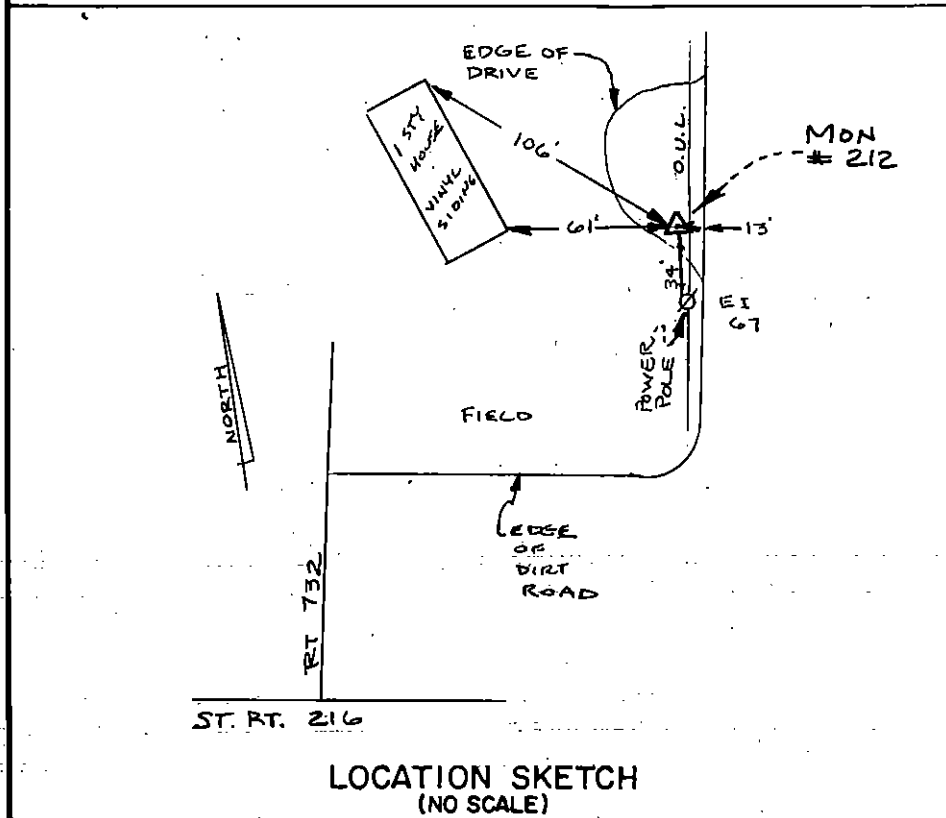
STATION NO.
212

HORIZONTAL DATA : VA. STATE PLANE COORD. - SOUTH ZONE (NAD 1983)		
UNITS	EASTING (X)	NORTHING (Y)
METERS	3681734.276	1107390.109
U.S. SURVEY FT.	12079156.537	3633162.383
LATITUDE (DMS)	37 16 59.7225	
LONGITUDE (DMS)	76 27 1.48314	
SCALE FACTOR	0.99994648	
CONVERGENCE \sphericalangle (DMS)	1 14 38.21	
VERTICAL DATA : REF. TO NATL. GEOD. VERT. DATUM (1988)		
UNITS	STATION ELEVATION	
METERS	1.62	
U.S. SURVEY FT.	5.31	

STATION DESCRIPTION :

DISTRICT : YORK

A 3-1/4" ALUMINUM DISK MONUMENT SET APPROXIMATELY FLUSH WITH THE GROUND STAMPED STATION NO. 212. TO REACH: FROM THE INTERSECTION OF STATE ROUTE 216 AND STATE ROUTE 643 AT BENA, GO ABOUT 0.43 MILE NORTHEAST ON STATE ROUTE 216 TO INTERSECTION OF STATE ROUTE 216 AND STATE ROUTE 732; GO ABOUT 0.5 MILE NORTH ON STATE ROUTE 732 TO A DIRT LANE ON EAST SIDE; GO ABOUT 0.2 MILE EAST AND THEN NORTH ON DIRT LANE TO MONUMENT SITE ON WEST SIDE OF DIRT LANE.



DATE: JANUARY, 1992

NOTE: USERS OF MONUMENTS LOCATED ON PRIVATE PROPERTY
MUST OBTAIN LAND OWNERS PERMISSION BEFORE ENTERING



DAWSON & PHILLIPS, P.C.
CERTIFIED LAND SURVEYORS
(04) 693-2993