

GLOUCESTER COUNTY SURVEY MARK DATA SHEET

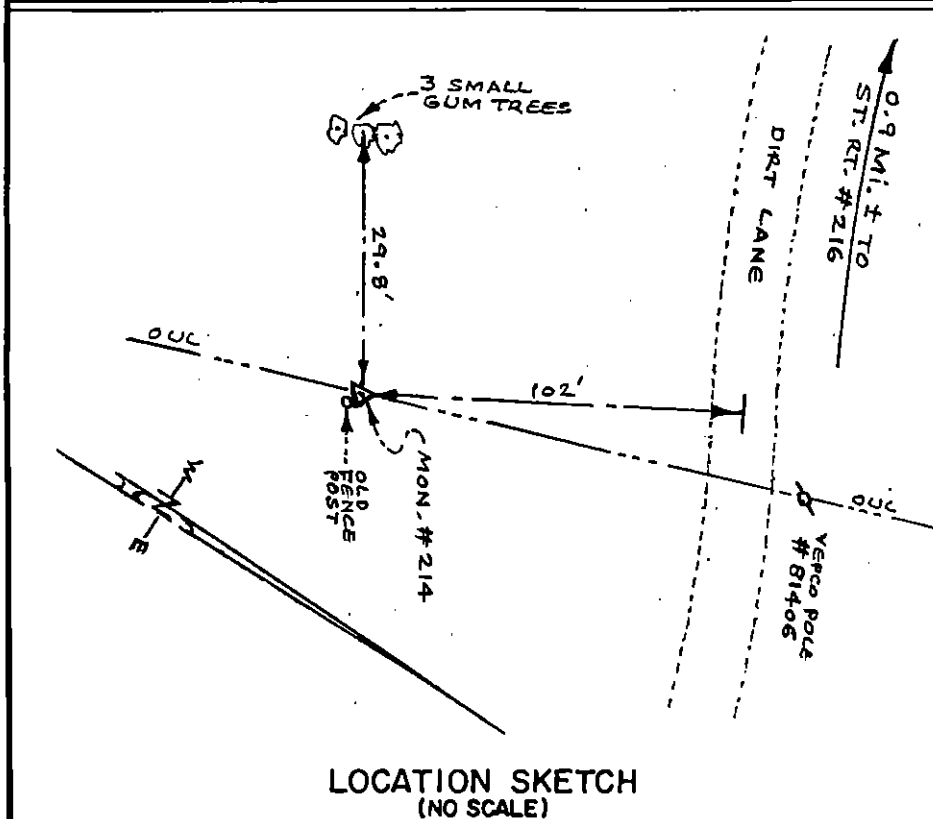
STATION NO.
214

HORIZONTAL DATA : VA. STATE PLANE COORD. - SOUTH ZONE (NAD 1983)		
UNITS	EASTING (X)	NORTHING (Y)
METERS	3682895.742	1105735.291
U.S. SURVEY FT.	12082967.114	3627733.201
LATITUDE (DMS)	37 16 5.2355	
LONGITUDE (DMS)	76 26 15.80937	
SCALE FACTOR	0.99994690	
CONVERGENCE \sphericalangle (DMS)	1 15 5.93	
VERTICAL DATA : REF. TO NATL. GEOD. VERT. DATUM (1988)		
UNITS	STATION ELEVATION	
METERS	0.80	
U.S. SURVEY FT.	2.63	

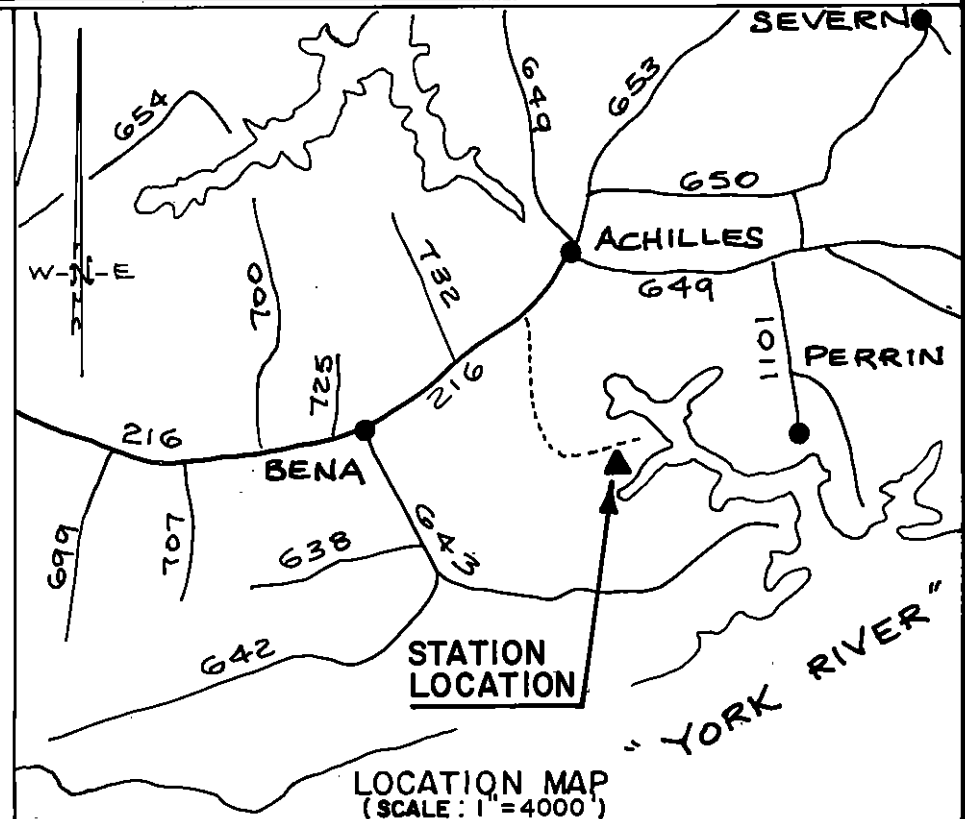
STATION DESCRIPTION :

DISTRICT : YORK

A 3-1/4" ALUMINUM DISK MONUMENT SET APPROXIMATELY FLUSH WITH THE GROUND STAMPED STATION NO. 214. TO REACH: FROM THE INTERSECTION OF STATE ROUTE 216 AND STATE ROUTE 649 AT ACHILLES, GO ABOUT 0.34 MILE SOUTHWEST ON STATE ROUTE 216 TO THE INTERSECTION OF A PRIVATE ROAD ON THE SOUTH SIDE OF STATE ROUTE 216; GO ABOUT 0.9 MILE SOUTHEAST ALONG PRIVATE ROAD TO THE MONUMENT SITE.



LOCATION SKETCH
(NO SCALE)



LOCATION MAP
(SCALE: 1"=4000')

DATE: JANUARY, 1992

NOTE: USERS OF MONUMENTS LOCATED ON PRIVATE PROPERTY
MUST OBTAIN LAND OWNERS PERMISSION BEFORE ENTERING



DAWSON & PHILLIPS, P.C.
CERTIFIED LAND SURVEYORS
(804) 693-2993